



Ice Cube

# CB 1265 HC

B-Qube



## Self-contained ice maker - Sprayer system Daily production up to 140 kg

|               |                 |               |                 |
|---------------|-----------------|---------------|-----------------|
| Hotel         | ● ● ● ● ● ● ● ● | Hotel         | ● ● ● ● ● ● ● ● |
| Restaurant    | ● ● ● ● ● ● ● ● | Restaurant    | ● ● ● ● ● ● ● ● |
| Fast food     | ● ● ● ● ● ● ● ● | Fast food     | ● ● ● ● ● ● ● ● |
| Bar           | ● ● ● ● ● ● ● ● | Bar           | ● ● ● ● ● ● ● ● |
| Disco         | ● ● ● ● ● ● ● ● | Disco         | ● ● ● ● ● ● ● ● |
| Fish markets  | ● ● ● ● ● ● ● ● | Fish markets  | ● ● ● ● ● ● ● ● |
| Supermarkets  | ● ● ● ● ● ● ● ● | Supermarkets  | ● ● ● ● ● ● ● ● |
| Medical & SPA | ● ● ● ● ● ● ● ● | Medical & SPA | ● ● ● ● ● ● ● ● |
| Industry      | ● ● ● ● ● ● ● ● | Industry      | ● ● ● ● ● ● ● ● |



Available Drain Pump (DP) version



Available Drain Pump (DP) version

### ► Features & Plus

- Compact and crystal cube
- AISI 304 SS Scotch Brite finish
- Tropical class +43°C
- Air or water cooling system
- Easy cleanable internal rounded surfaces
- HCFC-Free insulated storage
- RoHS Free
- Disappearing insulated door
- Electromechanical operation
- Adjustable Stainless Steel feet
- ON-OFF rocker switch
- Standard and special voltages
- HFC Free



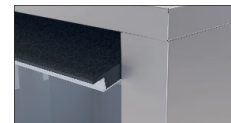
Carrozzeria AISI 304 Scotch Brite



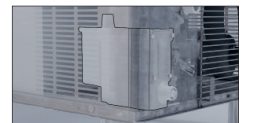
Adjustable stainless steel feet



Easy cleanable internal rounded surfaces



Disappearing insulated door



Drain Pump (DP)

## 2 Years Warranty subject to limitations

### ► Certifications available for this model



[www.bremaice.it](http://www.bremaice.it)  
[info@bremaicegroup.it](mailto:info@bremaicegroup.it)

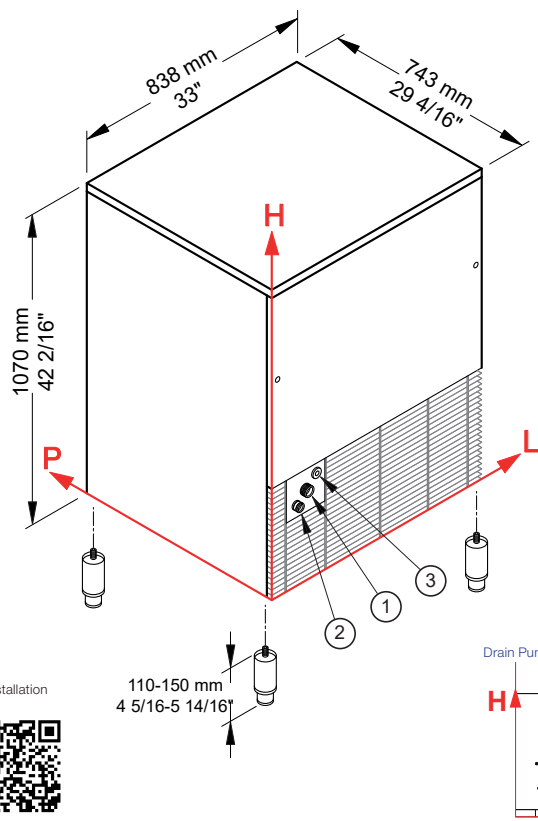
We are Brema Group





## Self-contained ice maker - Sprayer system

### Daily production up to 140 kg



Installation

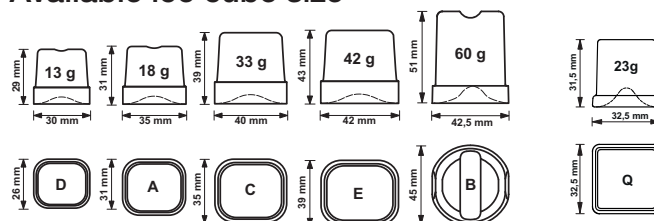


### ► Working conditions

- Location: **Indoor**

|                      | Min             | Max             |
|----------------------|-----------------|-----------------|
| Ambient temperature  | +10° C / +50° F | +43° C / 110° F |
| Water temperature    | +3° C / +37° F  | +32° C / +90° F |
| Voltage              | -10%            | +10%            |
| Water inlet pressure | 1bar (14 psi)   | 6bar (84 psi)   |

### ► Available ice cube size



### ► Performances

|                 |       | Water temperature |         |        |         |        |         |
|-----------------|-------|-------------------|---------|--------|---------|--------|---------|
|                 |       | 7° C              | 45° F   | 15° C  | 60° F   | 21° C  | 70° F   |
| Air temperature | 10° C | 140 kg            |         |        |         |        |         |
|                 | 50° F |                   | 309 lbs |        |         |        |         |
|                 | 21° C |                   |         | 134 kg |         |        |         |
|                 | 70° F |                   |         |        | 295 lbs |        |         |
|                 | 32° C |                   |         |        |         | 122 kg |         |
|                 | 90° F |                   |         |        |         |        | 269 lbs |

### ► Connections standard version

- ① Water in.: 141 mm / 5 9/16" - 290 mm / 11 7/16" - 3/4"
- ② Water out.: 79 mm / 3 2/16" - 245 mm / 9 10/16" - 24 mm / 15/16"
- ③ Electrical connections: 186 mm / 7 5/16" - 326 mm / 12 13/16"

### Connections DP version

- 1 Water in.: 151 mm / 5 15/16" - 209 mm / 8 4/16" - 3/4"
- 2 Water out.: 92 mm / 3 10/16" - 52 mm / 2 1/16" - 24 mm / 15/16"
- 3 Electrical connection: 165 mm / 6 8/16" - 314 mm / 12 6/16"

All measures are referred to the rear bottom-left corner (L-H-Ø)

### ► Technical information

|                           |  |
|---------------------------|--|
| Production in 24h         | 140 kg / 309 lbs                         |
| Store capacity, up to     | 65 kg / 143 lbs                          |
| Cooling system            | A - W                                    |
| Kind of cube              | A-18g, C-33g, D-13g, E-42g, B-60g, Q-23g |
| Refrigerant               | R290                                     |
| Standard voltage          | 220-240 V ~ 50 Hz                        |
| Average power consumption | 900 W                                    |
| Fuse                      | 16 A                                     |
| Electrical consumption    | 23 kWh/100kg                             |

All the technical information must be considered at the following conditions:

- Sizes without feet
- Standard Cube (18 g)
- Ambient temperature +21° C
- Water temperature +15° C
- Electrical consumption at +32° C (standard voltage)
- Average power consumption at +43° C (standard voltage)

**Models and specifications are subject to change without notice**

|                            |                                     |
|----------------------------|-------------------------------------|
| Water consumption          | A: 2 l/kg - 24 gal/100 lbs          |
|                            | W: 17 l/kg - 203,7 gal/100 lbs      |
| Sizes (L-P-H mm)           | 838 - 743 - 1070                    |
| (L-P-H in)                 | 33 - 29 4/16 - 42 2/16              |
| Sizes with pack (L-P-H mm) | 880 - 785 - 1245                    |
| (L-P-H in)                 | 34 10/16 - 30 14/16 - 49            |
| Net weight                 | 113 kg / 249 lbs                    |
| Gross weight               | 133 kg / 293 lbs                    |
| Finish                     | Stainless steel, 18/8, scotch brite |

Rev. 00 - Issued February 2026

