



Ice Cube

CB 425 HC

B-Qube



Self-contained ice maker - Sprayer system Daily production up to 54 kg

Hotel	●	●	●	●	●	●	●	●	●
Restaurant	●	●	●	●	●	●	●	●	●
Fast food	●	●	●	●	●	●	●	●	●
Bar	●	●	●	●	●	●	●	●	●
Disco	●	●	●	●	●	●	●	●	●
Fish markets	●	●	●	●	●	●	●	●	●
Supermarkets	●	●	●	●	●	●	●	●	●
Medical & SPA	●	●	●	●	●	●	●	●	●
Industry	●	●	●	●	●	●	●	●	●

Hotel	●	●	●	●	●	●	●	●	●
Restaurant	●	●	●	●	●	●	●	●	●
Fast food	●	●	●	●	●	●	●	●	●
Bar	●	●	●	●	●	●	●	●	●
Disco	●	●	●	●	●	●	●	●	●
Fish markets	●	●	●	●	●	●	●	●	●
Supermarkets	●	●	●	●	●	●	●	●	●
Medical & SPA	●	●	●	●	●	●	●	●	●
Industry	●	●	●	●	●	●	●	●	●



Available Drain Pump (DP) version



Available Drain Pump (DP) version

► Features & Plus

- Compact and crystal cube
- AISI 304 SS Scotch Brite finish
- Tropical class +43°C
- Air or water cooling system
- Easy cleanable internal rounded surfaces
- HCFC-Free insulated storage
- RoHS Free
- Disappearing insulated door
- Electromechanical operation
- Adjustable Stainless Steel feet



Green-Tech Design



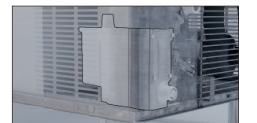
Side openings for better ventilation



Double water inlet (W models only)



Plug-in electrical connection



Drain Pump (DP)

2 Years Warranty subject to limitations

► Certifications available for this model



www.bremaice.it
info@bremaicegroup.it

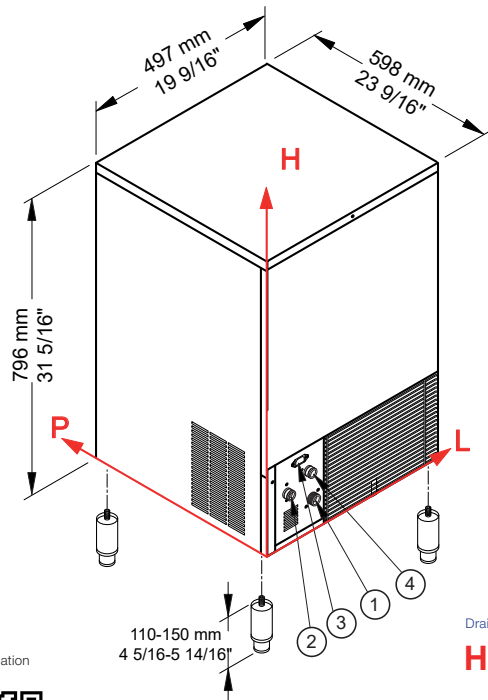
We are Brema Group





Self-contained ice maker - Sprayer system

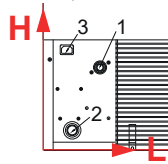
Daily production up to 54 kg



Installation

110-150 mm
4 5/16-5 14/16"

Drain Pump

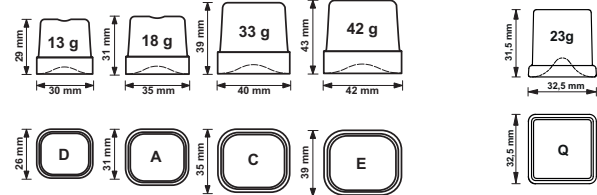


► Working conditions

- Location: **Indoor**

	Min	Max
Ambient temperature	+10° C / +50° F	+43° C / 110° F
Water temperature	+3° C / +37° F	+32° C / +90° F
Voltage	-10%	+10%
Water inlet pressure	1bar (14 psi)	6bar (84 psi)

► Available ice cube size



► Performances

		Water temperature					
		7° C	45° F	15° C	60° F	21° C	70° F
Air temperature	10° C	54 kg					
	50° F		119 lbs				
	21° C			48 kg			
	70° F				106 lbs		
	32° C					44 kg	
90° F						97 lbs	

► Connections standard version

- ① Water in.: 130 mm / 5 2/16" - 95 mm / 3 12/16" - 3/4"
- ② Water out.: 56 mm / 2 3/16" - 155 mm / 6 2/16" - 24 mm / 15/16"
- ③ Electrical connections: 95 mm / 3 12/16" - 225 mm / 8 14/16"
- ④* Cond. water in.: 119 mm / 4 11/16" - 181 mm / 7 2/16" - 3/4"

* Only for water cooling systems

Connections DP version

- 1 Water in.: 130 mm / 5 2/16" - 190 mm / 7 8/16" - 3/4"
- 2 Water out.: 65 mm / 2 9/16" - 51 mm / 2" - 24 mm / 15/16"
- 3 Electrical connection: 55 mm / 2 3/16" - 231 mm / 9 2/16"

All measures are referred to the rear bottom-left corner (L-H-Ø)

► Technical information

Production in 24h	48 kg / 106 lbs
Store capacity, up to	25 kg / 55 lbs
Cooling system	A - W
Kind of cube	A-18g, C-33g, D-13g, E-42g, Q-23g
Refrigerant	R290
Standard voltage	220-240 V ~ 50 Hz
Average power consumption	450 W
Fuse	10 A
Electrical consumption	28 kWh/100kg

All the technical information must be considered at the following conditions:

Sizes without feet

Standard Cube (18 g)

Ambient temperature +21° C

Water temperature +15° C

Electrical consumption at +32° C (standard voltage)

Average power consumption at +43° C (standard voltage)

Models and specifications are subject to change without notice

Water consumption	A: 3 l/kg - 35,9 gal/100 lbs
	W: 15 l/kg - 179,7 gal/100 lbs
Sizes (L-P-H mm)	497 - 598 - 796
(L-P-H in)	19 9/16 - 23 9/16 - 31 5/16
Sizes with pack (L-P-H mm)	550 - 660 - 970
(L-P-H in)	21 10/16 - 26 - 38 3/16
Net weight	46 kg / 101 lbs
Gross weight	54 kg / 119 lbs
Finish	Stainless steel, 18/8, scotch brite

Rev. 00 - Issued February 2026

